



سپیس ٹیک ڈ.م.م

SPACETECH W.L.L

Facility Management



A PARTNER
YOU CAN TRUST



SPACETECH GROUP W.L.L is a professionally managed company with its registered office in Doha-Qatar Middle East operations based in Qatar with a global vision of providing MEP,Civil, Facility Management & Manpower Solution on turnkey basis. As a team working together to achieve the common goal of becoming the industry leader in the region, Space Tech team members devote themselves to the customer. We are committed to continues and progressive improvement, looking forward to new horizons.

SPACETECH considers its work force as one of its most valuable assets. Throughout its professional

teamonment which are based on the system study and analysis, supply, and installation, commissioning and maintaining the total systems. SpaceTech Group W.L.L gives due regard to Customer relations of engineers, SPACETECH provides total turnkey solutions in all areas of its specialized activities. The solutions include providing consultancy for optimum systems solutions for the particular envirhich is acknowledged by its Value Added Services.

“ We are not just rendering services.
We are rendering a vision.

OUR VISION



to conduct our business professionally and efficiently
to ensure most of all client satisfaction.

We are striving to facilitate and expand our clientele

E-mail: fm@spacetechgroup.com | Cont: 55833995

Why Space Tech?



We got the tools



Certified experience



Competitive pricing



Guaranteed work



10 Years experience



Great support

Our Engineering Services Include

Civil

MEP

Engineering Facilities



ENGINEERING CIVIL

Our Engineering civil division includes all types of construction works including residential commercial and industrial purposes our company mainly focuses its services on

General Construction

Floor Coating Works

Waterproofing Solutions

Fit out works

GENERAL CONSTRUCTION

Soil Investigation.
Building Construction(Civil & MEP).
Painting Works (Epoxy Fire and Normal).
Decoration Works (Gypsum and GRC).
Interlock Pavement Work
Steel Structural Work.
Piling and Testing of Piles.
Dewatering well.
Pile Cap Breaking.
Capping Beam Work.
Guide Wall Work.
Earth Hole Drilling.
Soakaway Hole Drilling.
Excavation.

FLOOR COATING WORKS

Epoxy Flooring
Floor Seal/Concrete Polishing
Epoxy 3D Floor coatings

WATERPROOFING SOLUTIONS

Membrane Coating
Crystalline Coating
Impregnation Coating
Rubberized Elastameric Coating
Epoxy Coating for Damp surface
Cementitious Water Proofing System
Polyurethane Water Proofing System

FITOUT WORKS

Carpentry
Exhibition Stand
Kiosk
Signage works
Celotex ceilings
Interior Designing

MEP WORK

Our MEP services provides complete multidiscipline solution for the requirements of our valued clients, by designing as per the exact requirements, supplying of the right material, installing according to the local and international standards and testing and commissioning to perfection, as well as maintaining and giving the necessary after sales services that might be necessary in the future.

MEP Division operates in the Design, Supply, Installation and Test & Commissioning of the following activities



AIR CONDITIONING SYSTEM

- CHILLED WATER SYSTEM
- CONDENSER WATER SYSTEM
- CENTRAL AIR HANDLING SYSTEMS
- INDIVIDUAL A/C SYSTEMS AND CONTROLS



DUCT SYSTEM

- Fiberglass ductboard and flexible duct as designed.
- Air conditioning and thermostat controls (Honeywell or Lennox).
- Install condensate drain with a clean out tee at the air handler. The tee shall have a removable cap for clean out purposes.
- Adjustable hot and cold air vents (white in color).
- Venting of dryer and bath exhaust fans with roof jacks and/or wall caps.
- System start up, testing and adjustment.
- Meet requirements of FHA, VA.
- Broom sweep and clean up daily
- Warranty and Service Work.



PLUMBING SYSTEM

- DOMESTIC WATER SYSTEM
 - Cold Water Supply
 - Hot Water Supply and Circulation Systems
- WASTE WATER SYSTEM
 - Drainage System (Gravity)
 - Plumbing Fixtures and Fittings



FIRE FIGHTING SYSTEM

- FIRE STAND PIPE SYSTEM
- FIRE SPRINKLER SYSTEM
- DRY EXTINGUISHERS



Annual Maintenance Contract

Space Tech is doing Annual Maintenance Contract for many premises and we will maintain and provide full coverage of operation includes overall monitoring activities, responds to priority tasks, any tasks informed by client/ client's representatives, problems observed etc.

Space Tech is providing periodical reports which are analyzed and evaluate our service delivery and make a progressive step forward. Daily inspection was carried out to check for any abnormalities in the system for common areas. Conduct reactive and quarterly preventive maintenance for electrical, plumbing and HVAC works. Maintain complete facilities including elevators, CCTV, housekeeping, security, fire alarm and firefighting system. Trouble shooting of faulty equipment and replacement of defective parts.



Fit Out Works

Space Tech is doing internal fit-out works. This works is based on Clients requirements specifications and drawings of Consultants. Following are our main areas of work.

- Raised floors and suspended ceilings.
- All types of flooring solutions.
- All HVAC related works.
- Distribution of mechanical and electrical services.
- Installation of electrical devices.
- Installation of plumbing and sanitary materials.
- Internal surface finishes.
- Installation of office partitions – glass/Gypsum etc.
- Internal paintings, sticker works.
- Other works as specified by the Client.



Refurbishment & Renovations

Space tech is providing complete refurbishment services, These refurbishment works are essentially of two types, the repair and renovation of buildings whose fabric has become worn and the retrofitting and reimagining of buildings where their appearance and function must change to suit new requirements. The repair and renovation of buildings often has a structural element which generally includes fitting out to new operational requirements. Often in cases where the fabric of existing buildings requires repair the building will be extended using conventional construction techniques.



Granite Paving

Granite stone paving brings beauty and class to any outdoor space. It can be used for creating paths, patios, outside dining areas or even utility areas. One of the biggest benefits of granite paving slabs, and something that makes granite patios so popular, is that it is incredibly durable, has a long-life span and can withstand constant movement, changes, weight and elements of the Great British weather.





Cubical Partition

Some people think a cubicle is just a cubicle, but we take our business seriously.

the smallest rooms in the building can lead to the biggest frustrations.

At Cubicle Centre we are working hard to make your life easy as possible.

Why Choose Cubicle Centre

For architects and specifiers

- We provide a full library of 2D CAD and 3D BIM (Building information Modeling) files for all our products.
- Specification sheets provide a detailed overview of each product
- Our create specification tool provides custom specification in seconds

For contractors and fitters

- Some of the shortest lead times in the industry
- Support throughout the design and build of your project
- Detailed fitting and installation instructions

For the end user

- Excellent quality products (even budget ranges have robust fitting)
- A cubicle range to suit any environment or budget
- Committed to using responsibly sourced wood-based materials



Our Services



Tile Work



Wooden Parquet Flooring



Plumbing Works



HVAC System



Air Duct Cleaning



Painting Works

Our Services



Interlock Work



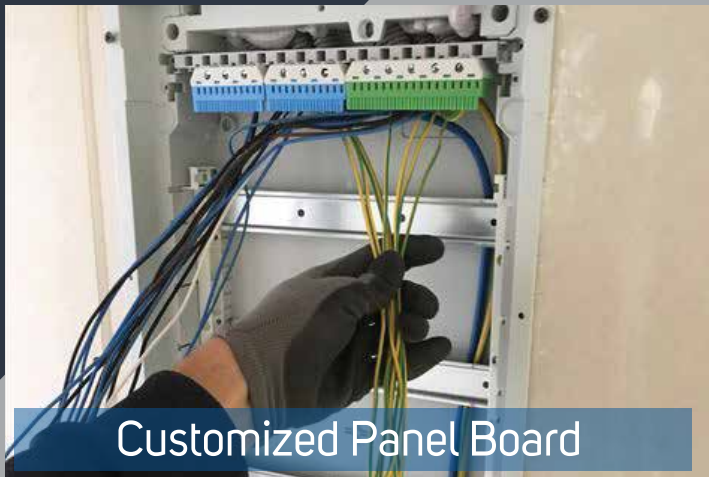
Gypsum Works



Raised Access Floor



Electrical Troubleshooting



Customized Panel Board



Glass Works

Our Services



OUR TRADING PRODUCTS



Vinyl Flooring



Cubicle



Raised Access Floor



Floor Carpet

WPC



Wall Cladding



Ducking



ELECTRO-MECHANICAL

- Valves and regulators.
- Actuators- water, air and steam.
- Pneumatic and hydraulic valves.
- Motorized valves and dampers.
- Sensors and transducers.
- Solenoid valves, Level switches.

ELECTRICAL AND CONTROL SYSTEM

- Blower/ pump motors.
- Circuit breakers, relays, control modules.
- Control panels and Distribution Boards.
- Commercial and industrial switches.

BUILDING PROTECTION RUBBER PRODUCTS

- Corner guard
- Wall guard
- Speed breaker
- Wheel stopper
- Parking block (wheel stopper)
- Wall guard, etc

PROJECTS GALLERY



Ameera Garden
Villa Compound Refurbishment



Lulu Express (AMC)



Just Real Estate (AMC)



Apartment Refurbishment
Pearl Qatar



Design & Build Fit-out Construction Of
A New Male & Female Public Toilet



Nozul Building Fitout Works

PROJECTS GALLERY



Rayyan tunnel Electrical work



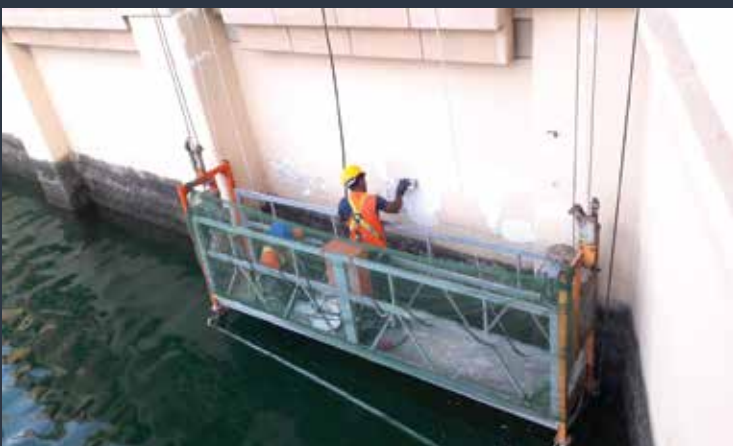
Sidra Medical (MEP)



Marble Installation & Polishing In Pearl



Car Parking Epoxy Flooring In AEB Building



Sea Area Facade Painting In Pearl Qatar



Rooftop Waterproofing In Pearl Qatar

Our Major Clients





Classification Certificate

إدارة تنظيم المشتريات الحكومية
GOVERNMENT PROCUREMENT REGULATORY DEPT

شهادة مقدم خدمة

رقم التسجيل التجاري: 51646 / قد تم تصنيفهم في قطاع مقدمي الخدمات بالأنشطة والفئات التالية:

رقم النشاط	اسم النشاط	الفئة
8110001	إدارة الفراغ	ثالثة

* الشروط و الأحكام

يجب على المصنف عند القيام بأي تصرف قانوني يترتب عليه تعديل في مركزه القانوني بما يخل بالفئة أو المجالات التي تم تصنيفه فيها، أن يخطر الإدارة بهذا التعديل خلال خمسة عشر يوماً من تاريخ إجراء هذا التصرف. ويترب على إخلال المصنف بالتزاماته المشار إليها انتهاك صلاحية شهادة التصنيف الممنوحة له.

بيان العناصر	النقاط المكتسبة	الحد الأقصى للنقاط
رأس المال	4.00	10
صافي الموجودات	20.00	20
مجموع قيمه العقود	0.00	25
عدد العقود	0.00	5
عدد الكادر الإداري	10.00	10
عدد الكادر الفني	10.00	30
مجموع النقاط	44.00	100

تاريخ الإصدار: 05/01/2021
صالحه حتى: 04/01/2023
مدير إدارة تنظيم المشتريات الحكومية بالإجابة

Space Tech ISO 9001-2015

We always preserves the standards to demonstrate the ability to consistently provide services that meet customer and regulatory requirements

As our motto is perfection beyond expectation we always maintain such quality and value of our service to satisfy our customers in a Best Way.

Workers Insurance and Policy

Workers compensation coverage is a state-mandated insurance program that covers lost wages and medical treatment resulting from an employee's work-related injury or illness. It also covers services needed to help an employee recover and return to work.

Insurance Partner



Organisation Structure





سبيس تك جروب ذ.م.م.
Space Tech Group W.L.L.
Facility Management



Printers 55066899

Space Tech Group, P.O. Box: 201929, Salwa Road, Doha - Qatar
Office Tel: +974 4412 8679, Whatsapp: +974 5005 1612, +974 3333 5431
E-mail: fm@spacetechgroup.com, info@spacetechgroup.com



سبيس تيك جروب
SPACETECH GROUP
ذ.م.م. و.ل.ل.